



La Center School District ANNUAL REPORT 2020-21

PO Box 1840
725 Highland Road
La Center, WA 98629

(360) 263-2131

Together We Can Do Great Things



INSIDE:

- 02 Superintendent's Message
- 03 About LCSD
- 04 LCSD Financial Report
- 05 LCSD Mission and Goals
- 06 Athletics and Activity Participation
- 07 LCHS Class of 2021
- 08 LCSD School Board

THE LCSD MISSION

The mission of the La Center School District is to create a supportive learning environment that empowers students to reach their fullest potential. We will do this in partnership with families, the community, staff and students to develop confident and self-reliant lifelong learners who can thrive in a rapidly changing, more technologically advanced and diverse society.



La Center School District

No. 101 complies with all state and federal rules and regulations and provides equal opportunity in programs and employment and does not unlawfully discriminate on the basis of race, color, national origin/ language, marital status, sex, sexual orientation including gender expression or identity, creed, religion, age, veteran or military status, disability, or the use of a trained dog guide or service animal by a person with a disability, and provides equal access to the Boy Scouts of America and other designated youth groups. We also comply with Section 504 of the Rehabilitation Act of 1973; Section 402 of the Vietnam Era Veterans Readjustment Act of 1974; the American with Disabilities Act of 1990; the Civil Rights Act of 1964; the Age Discrimination in Employment Act; Older Worker Protection Act; and all other state, federal and local equal opportunity laws. Inquiries regarding compliance procedures, contact Peter Rosenkranz, Superintendent and Civil Rights Coordinator at PO Box 1840, La Center, WA 98629, (360)263-2131 or by email at peter.rosenkranz@lacenterschools.org. Inquiries regarding Title IX compliance procedures, contact Matt Cooke, District Director of

Message from the

Dear La Center Families,

The 2020-2021 school year was our first full year working through COVID-19 restrictions and mandates. We continued to build on the challenges and opportunities provided in our system to learn and grow in new ways. Make no mistake, I was eager to return to a time where COVID impacts ceased and we could fully engage with our students without limits such as contact tracing, spacing, and masking. La Center School District was able to lead Clark County in returning students to full-time instruction. We started in the fall with students who were served in special education and kindergarten. We methodically, as the Department of Health would allow, moved toward the full return of all students. By April of 2021, we were able to have full-day instruction for all students, five days a week. This was an amazing feat as we were hampered by mandatory restrictions throughout the school year. Our staff, students, and parents pulled what success we could from a really tough year.

I believe in our students, staff, and parents as we work together to manage instruction and learning across multiple platforms. With the restrictions in the 20-21 school year we had limited direct instruction and our concern is for lagging reading skills and the needed resources to support our students. In the 21-22 school year we will direct resources into our elementary classrooms toward students to build reading skills. Initial data is showing that, with the significant state-mandated closures, our students' reading skills have decreased. Coupling existing reading resources with additional tools through Federal ESSER funds, we have been able to not only train staff but also increase resources directly impacting students to improve their reading skills.

I am truly thankful to this community for supporting the Middle School Bond in 2018. During the 20-21 school year the new middle school was constructed. We now have a beautiful new facility to house our students with dedicated science, art, special education, and classroom space enough for students to explore and learn. It is an amazing environment for our community that will last for generations. We will still use the Mary Gabrielson Elementary School, which opened in September 1938, over eighty years ago. Throughout the year we focused on being able to open in September of 2021. Thank you again for your dedication and foresight to support our students into the future.

We continue to stay focused on our mission to create a supportive learning environment that empowers students to reach their fullest potential. We will do this in partnership with families, the community, staff, and students to develop confident and self-reliant lifelong learners who can thrive in a rapidly changing, more technologically advanced, and diverse society. I look forward to the year to come and I continue to be impressed by the perseverance of our community and the amazing students that make up La Center School District.

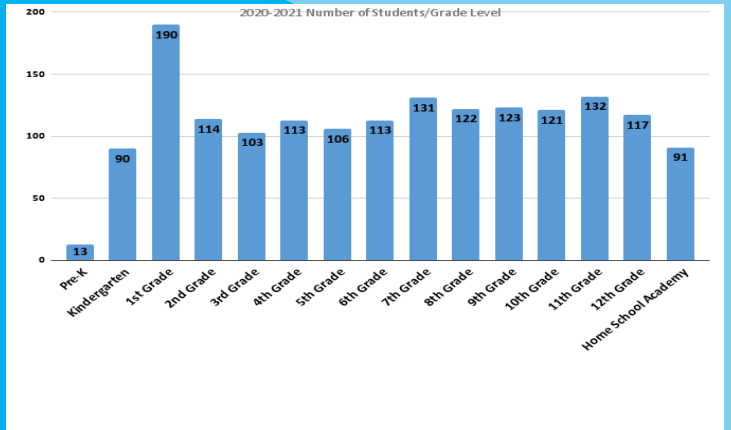
Thank you,

Peter Rosenkranz, Superintendent

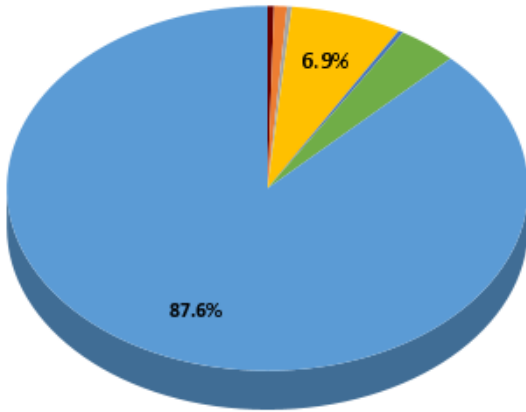


About La Center

Total Enrollment
2020-2021
1579

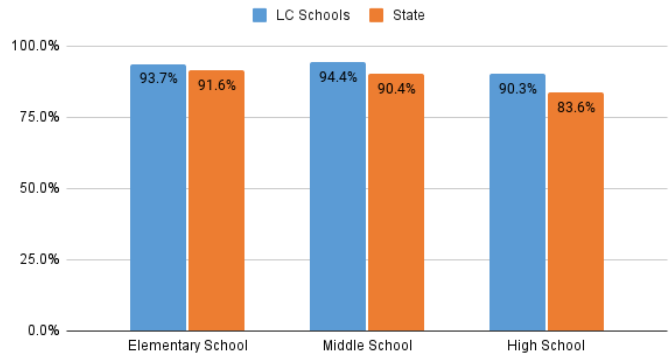


2020-21 Race/Ethnicity

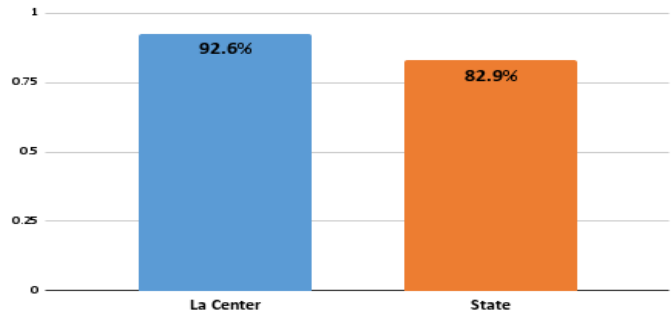


- American Indian/Alaskan Native .4%
- Asian .8%
- Black/African-American .3%
- Hispanic/ Latino of any race(s) 6.9%
- Native Hawaiian/Other Pacific Islander .3%
- Two or More Races 3.7%
- White 87.6%

2020-21 Attendance by School and State



2020-21 On-Time Graduation Rate



OSPI Report Card Statistics

Due to COVID-19 and distance learning, standardized assessments were not offered during the 2020-21 school year in our area. The table below represents the most-recent testing results at the state and national level

2020-21 SAT Scores	Reading	Math
La Center	N/A	N/A
State	621	627
National	533	528

[For More Information](#)

OSPI Report Card

Reportcard.ospi.k12.wa.us

LCSD Financial Information

2020-21 Expenditures per Student	Per Student	Percentage
Teaching	\$ 9,885.55	69%
Business/School Office/Administration	\$ 1,757.32	12%
Maintenance/Utilities/Insurance	\$ 1,090.07	8%
Food Service	\$ 196.95	1%
Technology	\$ 433.70	3%
Extra-Curricular	\$ 144.59	1%
Transportation	\$ 734.17	5%
Total	14,242.36	100%

2020-21 Revenue Data by Source	Amount	Percentage
State	\$ 19,291,240.98	86.10%
Federal	\$ 791,765.39	3.50%
Local Tax	\$ 2,124,356.75	9.50%
Local Non-Tax	\$ 141,121.79	0.60%
Other	\$ 52,088.39	0.30%
Total	\$ 22,400,573.30	100%



Come work with Us!

The La Center School District is a great place to work and boasts small class sizes, highly qualified staff, and a low employee turnover rate. Parents and community members support the mission of La Center School District through their involvement in our school programs and active volunteerism. For more information about why La Center is a great place to live and work, visit the district's employment page to see openings and to apply online.

www.lacenterschools.org/human-resources-portal/

La Center School District Mission

- *Ends 1* - The mission of the La Center School District is to create a supportive learning environment that empowers students to reach their fullest potential. We will do this in partnership with families, the community, staff, and students to develop confident and self-reliant lifelong learners who can thrive in a rapidly changing, more technologically advanced and diverse society.
- *Ends 2* - Academic and Learner Competencies Achievement– As the primary component of the Ends Policy, the Board expects each student to develop the academic awareness, skill development and cognitive capabilities necessary to be a confident, self-reliant learner that is prepared for a complex and rapidly changing world
- *Ends 3* - Personal Skill Development– As a second component of the Ends Policy, the Board expects each student to develop the personal skills to be a confident and self-reliant learner in a complex and rapidly changing world.
- *Ends 4* - Social Skills Development– As a third component of the Ends Policy, the board expects each student to develop the social skills to be a confident and self-reliant learner in a complex and rapidly changing world.

The district's goals to achieve the mission are listed below:

Goal 1: All students in the La Center School District will show growth in their content areas.

- CTE: Broaden our CTE work between middle school and high school focusing on the 21st Century Skills
- STEM: Continue to build on our three-year plan for STEM looking toward strong leadership within PBL instruction within LCSD
- Incorporate 21st Century Skills within our system as it pertains to the Ends Policy
- Monitor and adjust lessons based on formative assessment strategies to inform instruction and react in a timely manner to student challenges.

Measurement: Building and classroom data, State test scores, Graduation rate

Goal 2: Students who struggle in their learning in Grades P-12 will be analyzed and provided support through Multi-Tiered Systems of Support/Student Intervention Teams.

- Building teams collaborate with formative assessment data on potential Tier 1 and Tier 2 supports that can occur in the general education classroom.
- Title 1 Building wide program for LCES
- Work with students to mitigate barriers to student learning through a tiered system of supports. Assist with students becoming self-sufficient in their efforts to support themselves in their own learning.

Measurement: Special Education Referral Rates (Movement to Tier 3), Movement between Tier 1 & Tier 2,

Goal 3: All students in the La Center School District will develop the social skills to be a confident and self-reliant learner in a complex and rapidly changing world.

- Construct a communication plan with multiple forms of communication in and around our school and broader community.
- All students feel safe and welcome and are valued members of our school community.
- Students will experience an improved climate and culture through resiliency
- Wellness Policy

Measurement: Healthy Youth Survey, Social-Emotional Surveys, MS Bullying Student Survey (Olweus Fall 2018), After School Activity Participation Numbers

Athletics and Activities Participation

With the return of school sports, students were very excited to be able to participate in their favorite sports again.

Middle school had the following participation numbers:

Cross Country—22

Volleyball—26

Football—28

Boys' Golf—6



High school sports and clubs had the following participation numbers:



High School Sport/Activity	Participation #
Baseball (Boys)	32
Basketball (Boys)	21
Basketball (Girls)	10
Cheer (Coed)	10 (1B,9G)
Cross Country (Boys)	14
Cross Country (Girls)	8
Drama (Coed)	29 (12B,17G)
E.A.T. (Coed)	13 (4B,9G)
Equestrian (Coed)	7 (0B,7G)
FBLA (Coed)	4 (1B,3G)
Football (Boys)	44
Golf (Boys)	5
Golf (Girls)	10
GSA (Coed)	15 (6B,9G)
Knowledge Bowl (Coed)	4 (4B,0G)
LEOs (Coed)	10 (4B,6G)
Music – Band (Coed)	35 (28B,7G)
Music – Choir (Coed)	42 (9B,33G)
Soccer (Boys)	20
Soccer (Girls)	36
Softball (Girls)	9
Swim (Girls)	2
Track/Field (Boys)	12
Track/Field (Girls)	20
Volleyball (Girls)	25
Wrestling (Boys)	17
Wrestling (Girls)	1
Boys	233
Girls	221
Total	454



LCHS CLASS OF 2021

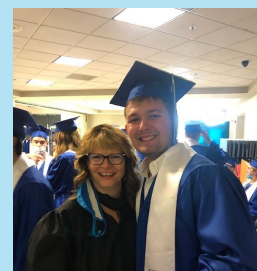
In a year full of challenges, the seniors were once again forced to confront the difficult losses due to Covid 19—homecoming, prom, etc. Making graduation special for our seniors was a priority for school administrators. On June 18th, we held the twilight parade through the streets of La Center. The students and their families decked out their vehicles for the event and the community did a wonderful job of coming out and expressing their excitement for our graduates.

Graduation itself was held outdoors on the football field and in our stadium. It marked the 100th year for graduates from La Center High School. The original graduating class of 1922 had only 2 graduates! The 2021 graduating class had 104 graduates. Congratulation to all of our graduates!



Class of 2021 Graduates Moving On!

College Bound (4 year)	28
College Bound (2 year)	35
Vocational School	0
Military	1
Work/Unknown	34



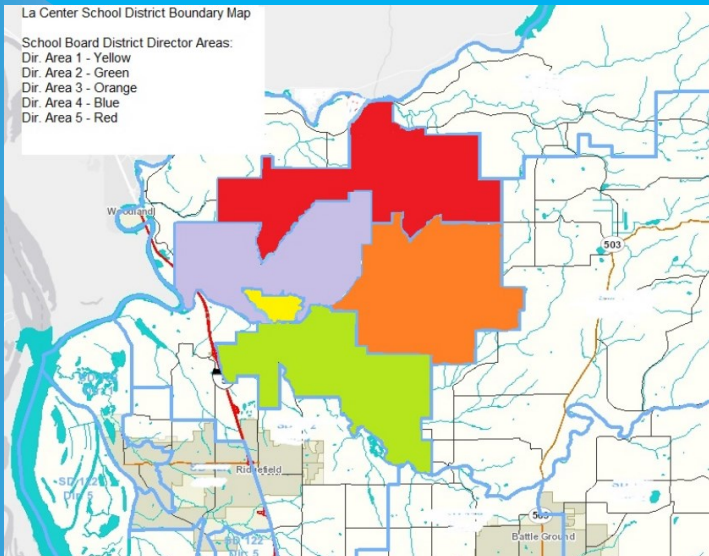
Class of 2021
Graduation
Rate 97%
(101/104)



The La Center School Board



Cris Yaw	Todd Jones	Win Muffett	Wendy Chord	Eric Lindberg
Joined the School Board in 2007	Joined the School Board in 2010	Joined the School Board in 2017	Joined the School Board in 2008	Joined the School Board in 2015
Represents Area #1	Represents Area #2	Represents Area #3	Represents Area #4	Represents Area #5
CONTACT INFORMATION	CONTACT INFORMATION	CONTACT INFORMATION	CONTACT INFORMATION	CONTACT INFORMATION
Phone: 360-281-8130	Phone: 360-263-3011	Phone: 360-263-3745	Phone: 360-263-1968	Phone: 360-263-6116
cris.yaw @lacenterschools.org	todd.jones @lacenterschools.org	win.muffett @lacenterschools.org	wendy.chord @lacenterschools.org	eric.lindberg @lacenterschools.org



Board meetings are normally held on the 4th Tuesday of each month with changes in November and December due to holidays. The board meeting schedule and agendas are found on the district website at: www.lacenterschools.org/About/LCSD.

CONTACT US

We welcome any comments or suggestions from parents and community members. Citizens' comments are also welcome at La Center School Board meetings. Visit us at www.lacenterschools.org or follow us on Facebook for the latest District news.