



January, 2021

# LC ACHIEVES!

## This Month's Focus: Old and New

### Some Old, Some New

This month's LC Achieves features some tried and true traditions and some brand new innovations. To everyone's relief, it's a new year, vaccines for COVID-19 are being distributed, bringing with them the hope that an end to the pandemic is finally in sight. After a year full of unique and difficult challenges, we are happy to turn the page and put our best foot forward! This year will see us transition back to in-school learning, the completion of the volunteer-funded HS climbing tower and the opening of our brand-new middle school! Here's to a great 2021!

Thank you, La Center Families! With your generous donations this year, the district delivered 2,360 pounds of food to our local food banks—that's more than a ton of food! Students worked hard volunteering to count the food, pack it up, and stuff the bus!



### Stuff the Bus

### Virtual Wintersong & MS Plays

The LCHS and LCMS choirs were invited to sing in this year's virtual concert performed by the Portland Symphonic Choir. The Portland Symphonic Choir is the oldest choir in the Portland community and traditionally performs yearly with the Oregon Symphony. In order to capture the performance, Mrs. Catchpole pre-recorded each individual student singing their part and a friend of the choir put all the student's performances together as a whole group presentation. As Mrs. Catchpole said, "This is the first time I've heard the whole choir this year!" The concert was broadcast on Facebook and YouTube.

Faced with the challenge of performing plays on Zoom, Mrs. Ott's middle school drama classes turned to the lost art of the radio play, performing two different audio dramas for friends and family in December: The Monsters Are on Maple Street and Treasure Island.

Thank you!

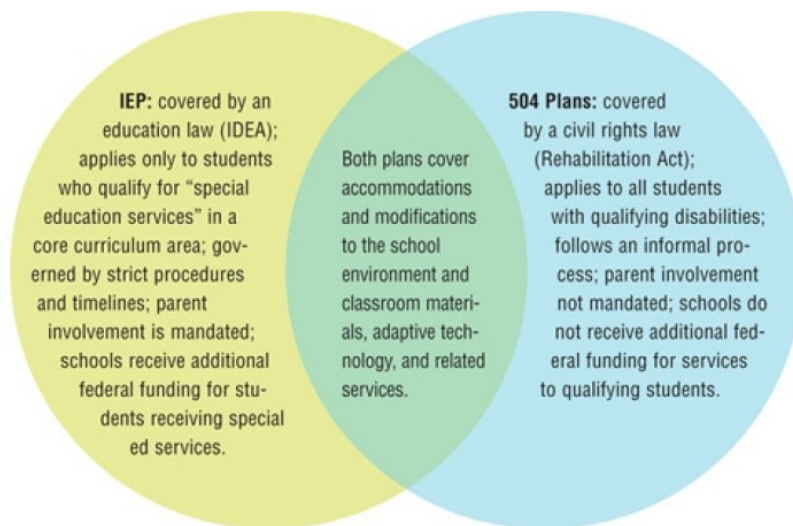
We would like to thank the kitchen staff for their dedication and commitment to helping students and families with meals during this difficult time. Our lunch staff provides breakfast and lunch during the day and after school. They also prepare sack breakfast and lunch for those families who need additional support during this time. Meals are handed out every evening on the front steps of the high school.

New Middle School Construction

Steel is up on the new middle school building and a roof is coming soon! The project continues to be on schedule and on budget. We have every expectation for the school to open in the fall!



The following graph is a helpful illustration of the difference between IEP's and 504 plans. The differences between the two services can be very confusing.



IEP vs. 504 Plans

### BY THE NUMBERS

**Section 504: Serving 93 students**  
**Special Education: Serving 222 students**  
**McKinney/Vento Homeless: Serving 19 students**  
**Foster Care: Serving 9 students**

### DISTRICT POPULATION (Dec 2020)

**High School: 511**  
**Middle School: 403**  
**Elementary: 648**  
**Total Students: 1562**